

915 MHz Antennas



MA-IS91-DS10
Dual Slant Subscriber
900-928 MHz (10.5 ± 0.5 dBi)
(370mm X 370mm X 40mm)
(14.5" X 14.5" X 1.6")

MA-WD90-DS12
Dual Slant Base Station - 90°
850-960 MHz (2 x 15 dBi)
(800mm X 225mm X 67mm)
(31.3" X 8.8" X 2.6")



MA-WC90-DS12
Dual Slant Base Station - 60°
850-960 MHz (2 x 15 dBi)
(800mm X 225mm X 67mm)
(31.3" X 8.8" X 2.6")

Stadium Antennas



MA-WA22-DP14
Stadium Dual Polarization
1.7-2.7 GHz (13-14 dBi)
(430mm x 240mm x 48mm)
(17" X 9.5" X 1.9")

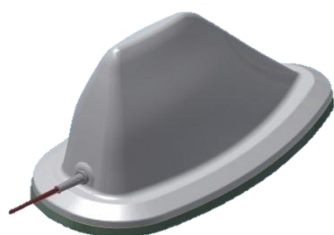


MA-WA82220-DBDP14
Dual Band Dual Polarization
698-960 MHz (13dBi)
1700-2700 MHz (13dBi)
(800mm x 600mm x 110mm)
(31.5" X 23.5" X 4.3")



MA-6927-DBDP8
Dual Band & Dual Pol Directional
698-960 MHz (8dBi)
1700-2700 MHz (9dBi)
(310 x 310 x 126 mm)
(12.2" x 12.2" x 4.96")

Mobile Antenna



MA-VMB-5
Multi Band Blade Antenna for Mobile Applications
698 MHz – 6.5 GHz (2-6 dBi)
(169mm x 85mm x 88mm)
(6.6" X 3.3" X 3.4")



MARS Antennas & RF Systems Ltd., established in 1994, is a world class leading Research & Development and manufacturer of antennas and RF solutions based in Israel.

MARS has demonstrated capability to design and provide products with exceptional performance characteristics.

The Company has unsurpassed expertise in developing and manufacturing standard, as well as customized wide band high performance antennas.

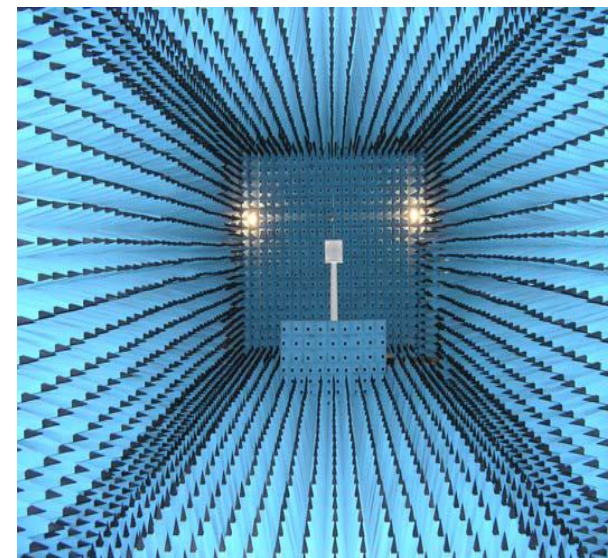


MARS specializes in outdoor & in-building multi polarized antennas. Company's subscriber & base station antennas are used in LTE, WiMAX, Mobile, MIMO, WLAN and Wi-Fi systems. MARS antennas are designed for fixed and mobile, stand-alone or embedded applications.

MARS antennas cover frequency ranges from 380MHz and up to 12GHz.

MARS's expertise is in developing and manufacturing of antennas based on printed circuit antennas called Flat or Flat Panel Arrays.

MARS owns an in-house anechoic chamber, which allows high quality product development and quality control.



MARS offers its customers customized Antennas & RF Systems solutions, which is an integral part of customer's application development process. Some of MARS outstanding designs were the first in the market and are still uncontested.

Among MARS's Key Customers are the world's leading companies such as: Cambium, Proxim, Infinet Wireless, Motorola solutions, Ruckus, Aruba, Alcatel Lucent, Juniper, Exalt, Airspan, etc.

MARS Antennas installations provide reliable coverage in major airports, government facilities, hospitals, enterprise networks, industrials, etc.

Markets

OEM's, Distributors, Manufactures, Integrators/Resellers, WISP (Wireless Internet Service Provider).

MARS Antenna installations provide reliable coverage in critical applications such as Aeronautics, Government Facilities, Hospitals, enterprise networks, industrials, etc.

Your contact person:

OMNI Directional Antennas



MA-WO-UWB
Ultra Wide Band OMNI Directional
138-6000 MHz (3-11 dBi)
(540mm X Dia.40mm, Base=72mm)
(21" X Dia.1.6", Base=2.8")



MA-WO7402700-5
Multi Band Omni Directional Base Station
Antenna featuring stable and efficient
performance
740-2700 MHz (4-6 dBi)
(470mm X Dia.66mm)
(18.5" x 2.5")

Dual Polarization OMNI Directional Antennas



MA-WO25-DP10
Dual Polarized
OMNI Directional
2.3-2.7 GHz
Vertical @ 9 dBi Horizontal @10 dBi
(640mm X Dia.110mm)
(25" X Dia. 4.3")



MA-WO56-DP10
Dual Polarized
OMNI Directional
4.9-5.9 GHz
Vertical @ 8dBi & Horizontal @ 10dBi
(365mm X Dia.66mm)
(14.38" X Dia. 2.6")

Dual Band Wi-Fi Small Factor High Gain Antennas, 60°

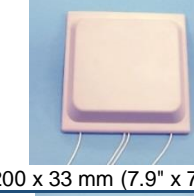
MA-WC2458-6
2.4-2.5 GHz @ 6dBi &
5.15-5.875 GHz @ 6dBi
Linear Vertical or Horizontal



MA-WC2458-10
2.4-2.5 GHz @ 9.5dBi &
5.15-5.875 GHz @ 10.5dBi
Linear Vertical or Horizontal

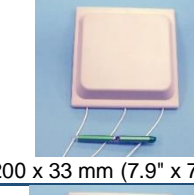
Dual Band MIMO Applications Small Sector Antenna, 60° / 120°

MA-WC2458-MIMO4-8
60° Sector Antenna
2.3-2.7 GHz & 4.9-6.1 GHz
4 X 6 dBi
Dual Slant ±45° & Dual Slant ±135°



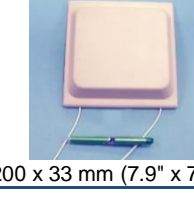
MA-WE2458-MIMO4-5
120° Sector Antenna
2.3-2.7 GHz & 4.9-6.1 GHz
4 X 5 dBi
Dual Slant ±45° & Dual Slant ±135°

MA-WC2458-3H
60° Sector Antenna
2.3-2.7 GHz & 4.9-6.1 GHz
3 X 5 dBi
Vertical & 2 Dual Slant ±45°



MA-WE2458-3H
120° Sector Antenna
2.3-2.7 GHz & 4.9-6.1 GHz
3 X 5 dBi
Vertical & 2 Dual Slant ±45°

MA-WC2458-2H
60° Sector Antenna
2.4-2.5 GHz & 5.15-5.875 GHz
2 X 7.5 dBi
Dual Slant ±45°



MA-WE2458-2H
120° Sector Antenna
2.3-2.7 GHz & 4.9-6.1 GHz
2 X 5 dBi
Dual Slant ±45°

Dual Band OMNI Antenna



MA-DBO2455-3
Dual Band OMNI Antenna
2.3-2.7 GHz (2dBi)
&
4.9-6.4 GHz (4dBi)
(54 x 34 mm)
(2.1" X 1.3")

Coming Soon



MA-WO36-DP10
Dual Polarized
OMNI Directional
3.3-3.6 GHz

In-Building / DAS

MA-WOLTE-DP1
Multi-Band Dual Polarized
Indoor/Outdoor Omni Antenna
698MHz-6.5GHz
Horizontal Polarization @ 5 dBi
Vertical Polarization @ 4-7.5 dBi
PIM certified



Base Dia. - 275mm, Height - 190mm
Base Dia. - 10.8", Height - 7.5"

MA-CQ27-1X
Multi-Band Indoor/Outdoor
Omni Antenna
380MHz-6GHz (1-6 dBi)
PIM certified

MA-WOLTE-DP2
Multi-Band Dual Polarized Omni
Antenna
1.7GHz-6.6GHz (3-6 dBi)



Antenna dimension (D,H):
220, 95 mm = 8.6", 3.7"
Base dimension (L,W,H):
369, 270, 30 mm = 14.5", 10.6", 1.2"

MA-WOLTE-3M1
Multi Band Tri-Ports Omni Antenna
698MHz-6.5GHz (2-6 dBi)

MA-CLTE-14
Multi Band Panel Antenna
698MHz-2700MHz (4-7.5 dBi)



230 X 214 X 31 mm (9" X 8.4" X 1.2")

MA-CL67-15
Multi Band Panel Antenna
806MHz-2170MHz (8 dBi)

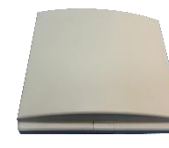


MA-CL67-15
Multi-Band Omni Antenna
806MHz-2.7GHz (5-8.5 dBi)
PIM certified
Antenna 175X35X125 mm = 6.9"X1.4"X4.9"
Base 185X105 mm = 7.3"X4.1"



MA-WOLTE-3X
Multi-Band Omni Antenna
698MHz-6.4GHz (2-6 dBi)
PIM certified
Base Dia. - 205mm, Height - 89mm
Base Dia. - 8.1", Height - 3.5"

Small Size, High Gain Subscriber



MA-WA57-3HG1
Small Size, High Gain Subscriber
4.9-6.5 GHz (18-19dBi)
(155mm X 155mm X 28mm)
(6.1" X 6.1" X 1.1")

Dual Polarization/Dual Slant Subscriber



MA-WA25-DP14
Dual Polarization/Dual Slant Subscriber
2.3-2.7 GHz (14dBi)
(200mm X 200mm X 33mm)
(7.9" X 7.9" X 1.25")

Broadband Subscriber



MA-WA58-1X
Broadband Subscriber
4.9-5.875 GHz (31-23dBi)
(305mm X 305mm X 15mm)
(12" X 12" X 0.6")

Dual Polarization/Dual Slant Subscriber



MA-WA25-DP17
Dual Polarization/Dual Slant Subscriber
2.3-2.7 GHz (17.5±1dBi)
(305mm X 305mm X 25mm)
(12" X 12" X 1.2")

Dual Polarization/Dual Slant Antennas



MA-WA36-DP21
Subscriber Antenna
3.3-3.8 GHz (22dBi)
Linear, Vertical &
Horizontal

MA-WA56-DP25N
4.9-5.875 GHz
(23.5±1 - 24.5±1dBi)
Linear, Vertical &
Horizontal

MA-WC56-DP17
60° Base station
4.9-6.1 GHz (17-18dBi)
Dual, Vertical & Horizontal

High Gain, Dual Polarization/Dual Slant Antennas

MA-WA56-DP28N
4.7-6.425 GHz
27±1 - 29±1dBi



600 x 600 x 30 mm (23.5" x 23.5" x 1.2")

MA-WA62-DP30
5.4-6.5 GHz
29±1dBi

You are welcome to check our website www.mars-antennas.com for more information

You are welcome to check our website www.mars-antennas.com for more information